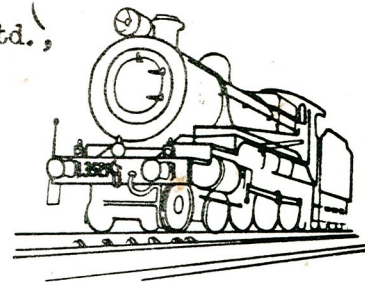


Allison
Sydney Live Steam Locomotive Society
Anthony Road, West Ryde, N.S.W. Coop. Ltd.,

Newsletter
Correspondence.
The Editor,
P.O. Box 124.
West Ryde, N.S.W.
2114

'Newsletter'

Vol. 6 No. 4 Price 10c



November 1978.

Editorial.

We come to the final Newsletter of 1978, it will run to five pages but we will not equal last year's record effort. I hope though that you have found the newsletter interesting. I would like to thank all members who have contributed this year. Your articles and help with information has made my job a little easier and I hope your support will continue for 1979.

I will attempt to keep the publication days the same as this year, ie., the 3rd Saturday of February, May, August, and November. This seems to fit in best with Club activities and my own school work.

1979 will see a return to a duplicated Newsletter. I have accepted the position of Industrial Arts Master at St. Marys High School and unfortunately I cannot take my present schools offset printing machine with me. I will have a duplicator at my direct disposal so that will make things easy in some respects.

John Lyons.

Christmas Party, B.B.Q.

The Christmas running day, childrens party and B.B.Q. will be held this year on Saturday 9th December. The childrens party should get under way about 3.00pm while the arrival of Santa Claus is timed for 4.00pm. If you have not let Elizabeth Tulloch know how many children / grandchildren you will bring to the party please let Elizabeth know as soon as possible. Members are asked to bring cakes for afternoon tea and presents for Santa to distribute to the children, up to \$4 value.

All members are invited to stay on for a B.B.Q. tea, - bring your own meat and liquid refreshments - , and stay on for train running as long as you like.

Charity Day.

The first Saturday of October was set aside for the Crowle Home Charity Day. This event was a washout in 1977 and the weather was not the best again this time. The drivers who did venture out onto the tracks had to put up with frequent showers and slippery conditions.

The takings for the gate and train rides were \$383.10 , a good effort considering the day and the Crowle Home Stall took about \$150.00 .

Invitation Day.

From notes by Barry Potter.

This event was transferred from the Illawarra Live Steamers to the Blue Mountains Railway Society. Once again our week end weather was not the best but considering this a good crowd was in attendance. The Society have improved their facilities, a brick canteen with a large awning as well as a toilet block - storage shed. The S.L.S.L.S. was represented by six or so members. Barry reports that a good day was enjoyed especially the lunch at the local pub.

New Members.

Robert Warwick Allison was transferred from provisional to full membership after a secret vote at a recent meeting.

We welcome the following provisional members to the Society ; Hugh Ryan, David Price, Kevin Sewell, James Leishman, Neil MacKellar, Brian Rawilson, Vivian Joseph Lipari, Bernard Courtenay and Peter Bradley.

1979 Convention.

If you are going to Perth contact should be made with Castledare or see our Secretary about registration forms. Late note. Bill Richards has Registration forms. also contact Bill if thinking about rail travel.

Up In The Air.

Our Treasurer was a contestant in the Kingsford Smith Memorial Air Race held over the weekend 4th and 5th of November. He had a lot of fun as did his passengers especially as he did not get lost. The Society would be interested to know that one of his passengers on the first leg of the race, Bankstown to Griffith, was none other than Sth. Australian live steam personality John Wakefield. While our treasurer was waiting at Bankstown for his turn to take off John W. came along, " what are you doing here ? " Our surprised flyer asked the same in return and found that John was a passenger in a plane coming from S.A. but had only got as far as Bathurst and could not get to Bankstown in time to start in the race. John had come on to Sydney by ground transport and as his plane had returned to Griffith he was looking for a ride that far. Our Treasurer happily took John as far as Griffith where he rejoined his S.A. friends.

Some members will be interested to know that John Wakefield now has the late Fred Pascoe's mallet. He has rebuilt it and should have it running by Easter time next year.

Exhibitions.

Mike Tyson has been looking after arrangements for two exhibitions to be held in January 1979. At the A.M.P. building Circular Quay Graham Sharp's Puffing Billy, Cec. Gunning's "Coronation" and Mal McAulay's C 3812 will be on display.

At the same time on the Podium Level at Centre Point a display will be held to mark the opening of the Eastern Suburbs Railway. On show will be C 3144T Maurie Haynes, D 5201 Barry Potter, D 5902 Ray Lee, C 3813 Barry Tulloch, 4613 Mike Tyson and C 3290 Barry Glover.

Stolen.

We have heard from SASMEE that three models were stolen in late August 1977. They were a 5" gauge "A" class tram, Unley, Route no.17, a 2½" gauge Olympiade and a 2½" gauge Dyak.

Roseworthy Live Model Steam Railway.

This is a 7½" gauge (2800 ft long) passenger railway at the Roseworthy agricultural College Oval which has taken over from the disbanded Adelaide Miniature Railway Association.

Duty Roster.

Dec. '78. J.L.Hurst, J.Davies, R.Lee, N.Campbell, K.Gapes, A.MacKellar.
 Jan. '79. B.Hurst, B.Tulloch, A.Eyre, L.Thompson, M.Yule, J.Hyde.
 Feb. '79. W.Edgecombe, P.Brotchie, G.Esdaile, W.Allison, B.Donovan, B.Peake.
 Mar. '79. T.Arney, G.Farkas, M.McAulay, D.Price, M.Tyson, C.Wear.

Refreshment Room News.

The Ladies were very pleased at the response to the request for cakes for the afternoon teas on public running days. Please try to keep up the good work.

Next Charity Day.

Our next charity day will be held for the Lantern Club on the last Saturday in February, that is February 24th.

Locomotive News.

Bernie Courtenay now owns the late Harry Rowe's "Simplex", it has been repainted and was running last public running day.

The Esdailes, Jack and Ted, are both making good progress with their locomotives. Jack's should be running very soon.

With this Newsletter we have a diagram of Ted Esdaile's locomotive stand. It may make life easier for some other locomotive builders, thanks Ted.

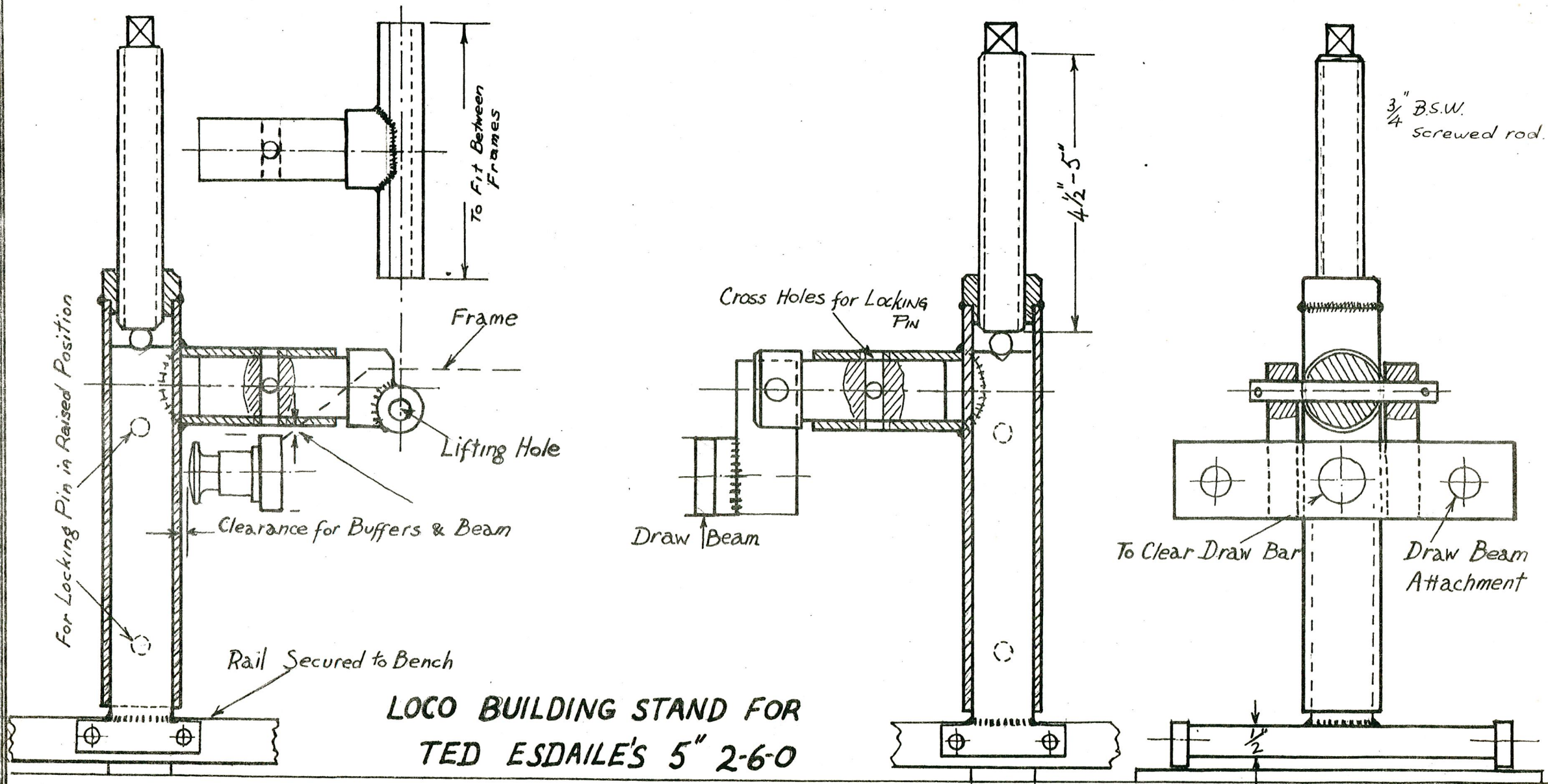
A.A.L.S.Standards.

For this Newsletter I have prepared a sheet with the coupling details for elevated rolling stock, next issue I hope to have the ground level coupling details.

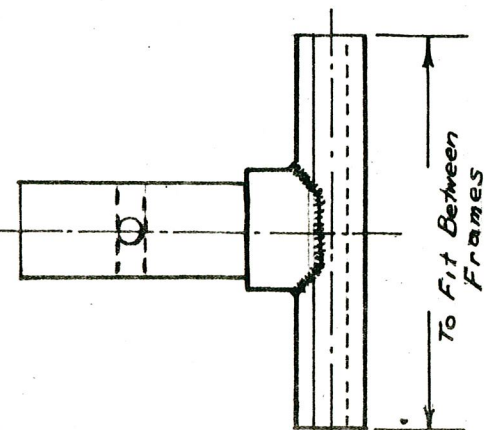
Model Engineer Supplies.

We have a catalogue from Live Steam Supplies, Nunawading, Vic. I will leave it in the Club house.

Graham Sharp has a Don Young Catalogue if anyone is interested.



For Locking Pin in Raised Position



To Fit Between Frames

Frame

Lifting Hole

Clearance for Buffers & Beam

Rail Secured to Bench

**LOCO BUILDING STAND FOR
TED ESDAILE'S 5" 2-6-0**

Cross Holes for Locking Pin

Draw Beam

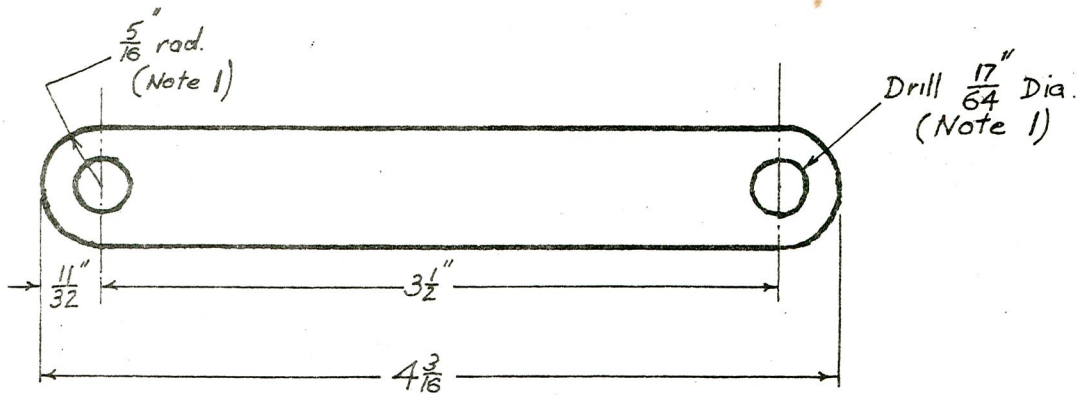
4 1/2" - 5"

3/4" B.S.W.
Screwed rod.

To Clear Draw Bar

Draw Beam Attachment

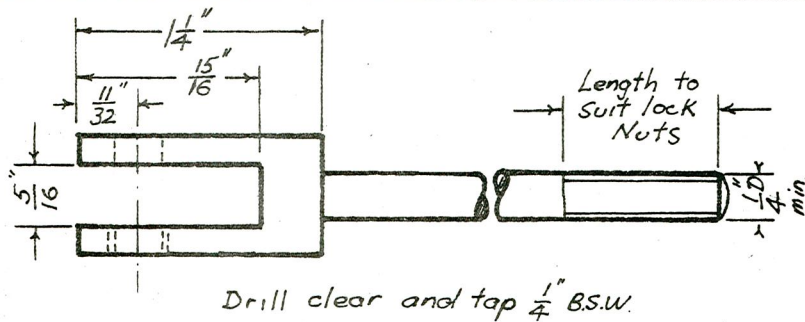
1/2"



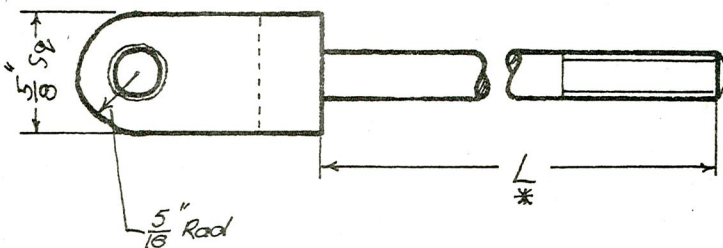
Note 1 Remove sharp edges

DRAW BAR
5/8" x 3/16" M.S.

Drawing No. 001/77
Couplings
Elevated Rolling-Stock
Draw-Bar

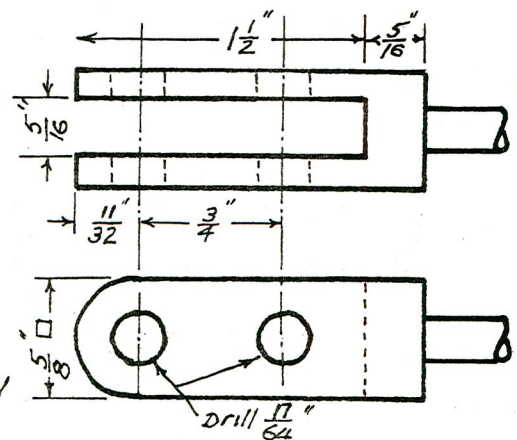
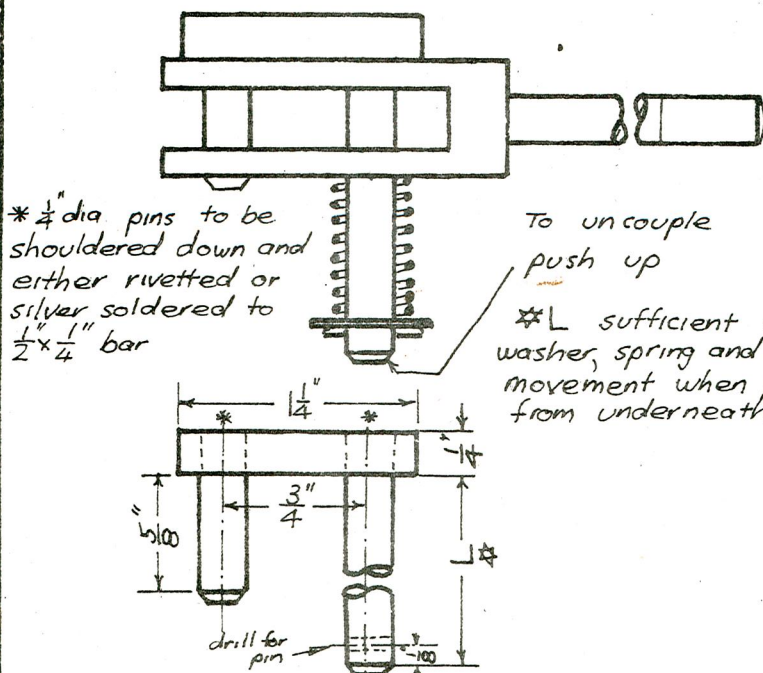


* L to suit Drag Beam thickness, suitable Compression spring, washer, Lock nuts plus approx 1/2" of travel when spring fully compressed under load.



Note. Other methods of springing and anchoring are allowable providing min. dia. of pins or bolts are 1/4"

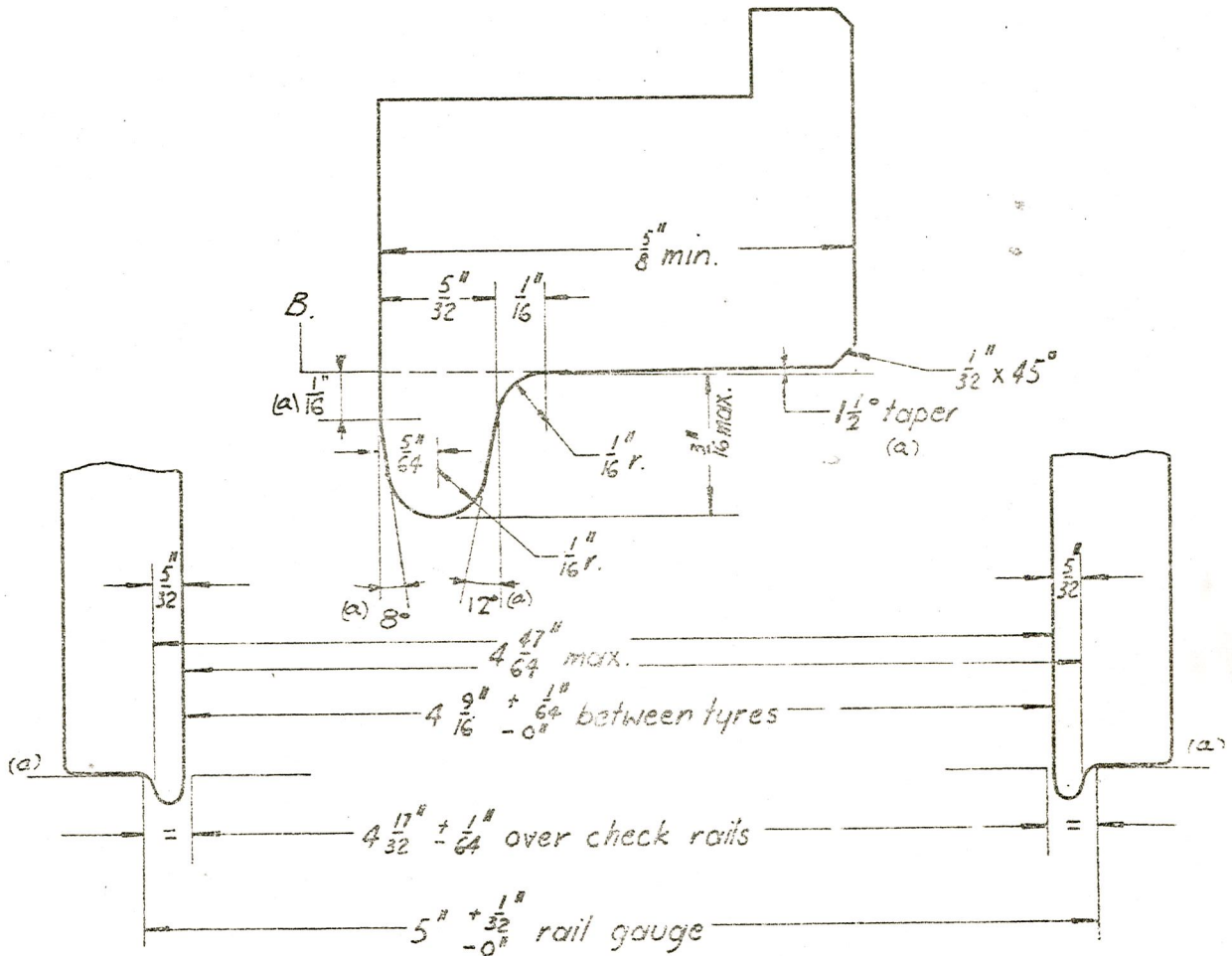
Drawing No. 002/77
Couplings
Elevated Rolling Stock
Type 1



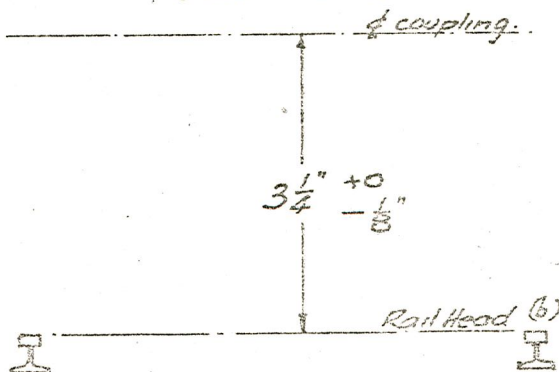
Drawing No. 003/77
Couplings
Elevated rolling Stock
Type 2

Notes:

- A. Clearance of running gear above rail head under full load to be not less than $\frac{3}{8}$ " (Car running boards - $\frac{5}{8}$ ")
- B. For intermediate driving wheels where flanges are not required the tread diameter shall be machined parallel for the total width of flange and flange to tread radius viz. $\frac{5}{32} + \frac{1}{16} = \frac{7}{32}$
- C. For intermediate driving wheels where "thin" flanges are required the flange width shall be $\frac{1}{8}$ ". The reduction of $\frac{1}{32}$ " to be effected from the front of the flange.



AUST. STD. COUPLING HEIGHT.
(Not to scale)



Postal Address

P.O. Box 124
West Ryde N.S.W.

(b) 10 OCT. '73 AUST. STD. COUPLING HEIGHT added. S.L.N.C.

(a) 16 NOV. '70 1/2 TAPER WAS 1 IN 50, 8° ANGLE WAS 5/8 R., 12° ANGLE ADDED, 1/16" ADDED. S.L.N.C.

Date	Revision.	Scale	Passed	Date
		Full Size & 4 Times Full Size	<i>[Signature]</i>	1.7.66
SYDNEY LIVE STEAM LOCOMOTIVE SOCIETY		Drawn	P	1514
STANDARD DIMENSIONS, FLANGE, TREAD & RAIL TRACK. 5" GAUGE RAILWAY.		Treed		
		Checked		